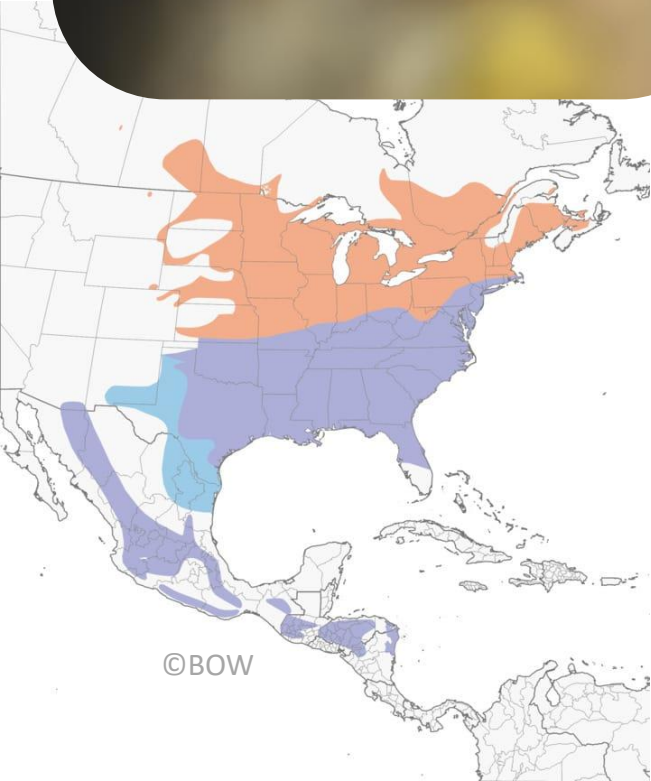


Photo by Quin Warsaw

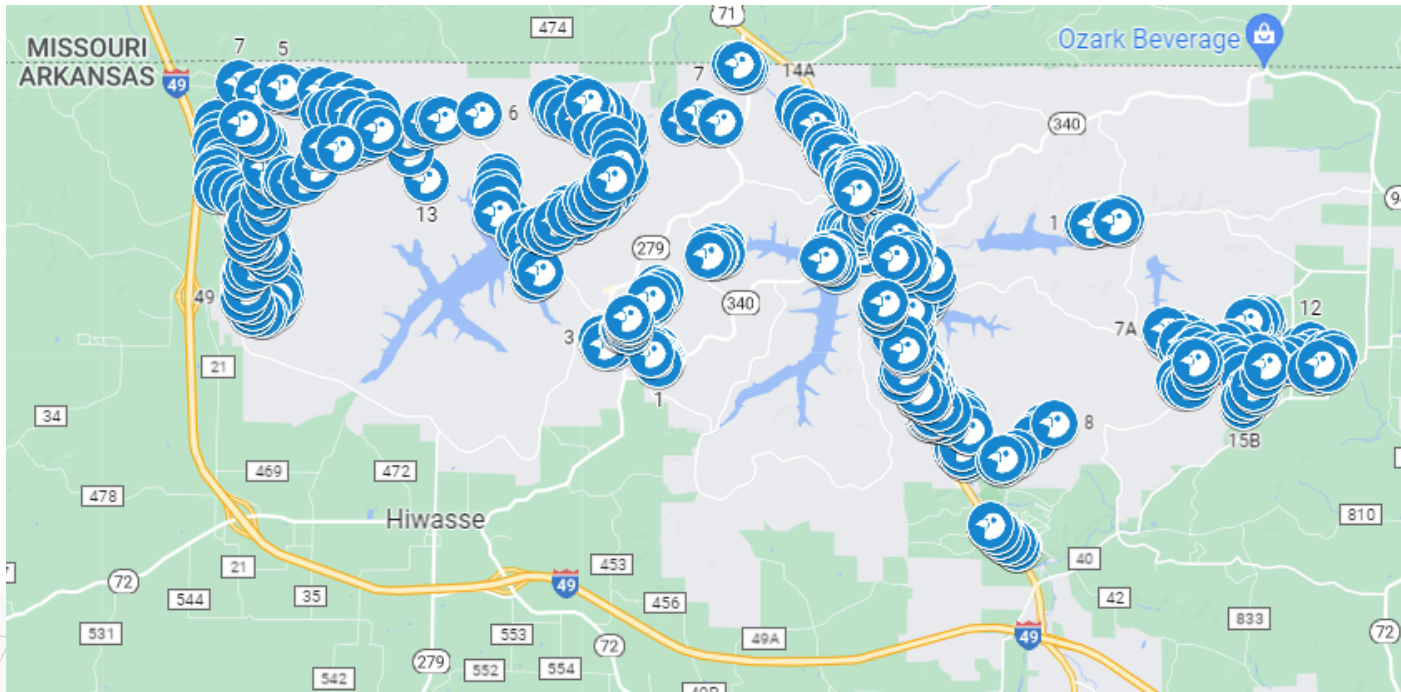


Jen Mortensen, University of Arkansas
Butch Tetzlaff, Bluebird Shed



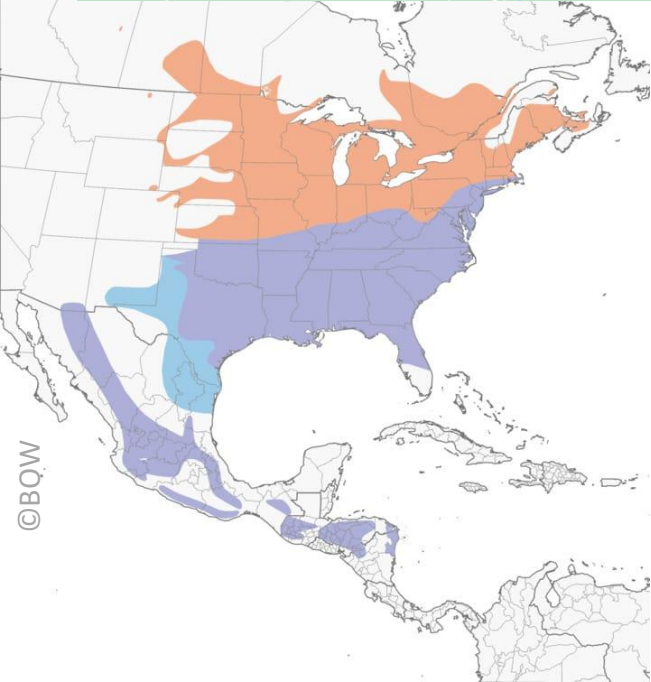
Research objectives:

1. Calculate **recruitment** into the local population
2. Study **winter roosting behavior** of adults and non-dispersing HYs
3. Establish whether pairs practice **assortative mating**
4. Determine what factors influence **box occupancy and productivity**



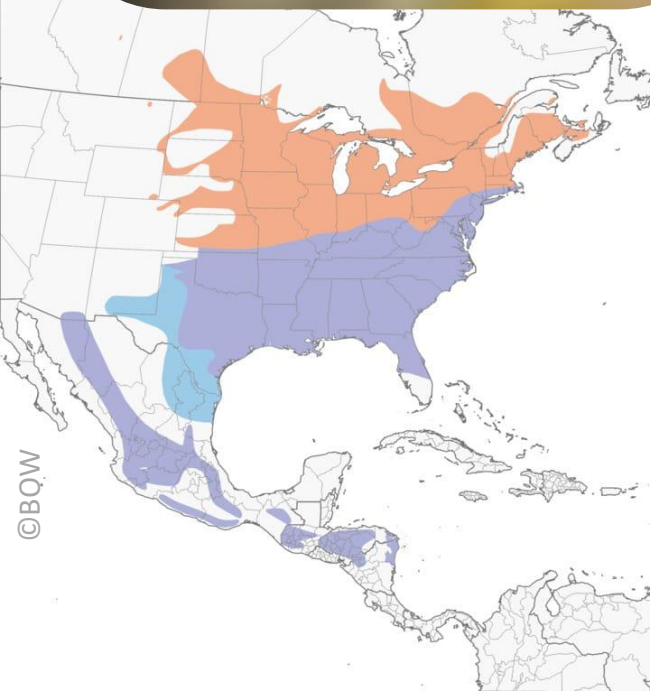
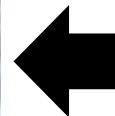
- Berksdale Golf Course (fairways 5, 6, 7)
- Bella Vista Memorial Garden Cemetery
- Loch Lomand Dog Park
- Branchwood Recreation Center
- St. Bernard Catholic Church
- Presbyterian Church
- Glasgow Car Trail (boxes 1-10)

~100 boxes total



Research objectives:

1. Calculate **recruitment** into the local population
2. Study **winter roosting behavior** of adults and non-dispersing HYs
3. Establish whether pairs practice **assortative mating**
4. Determine what factors influence **box occupancy and productivity**



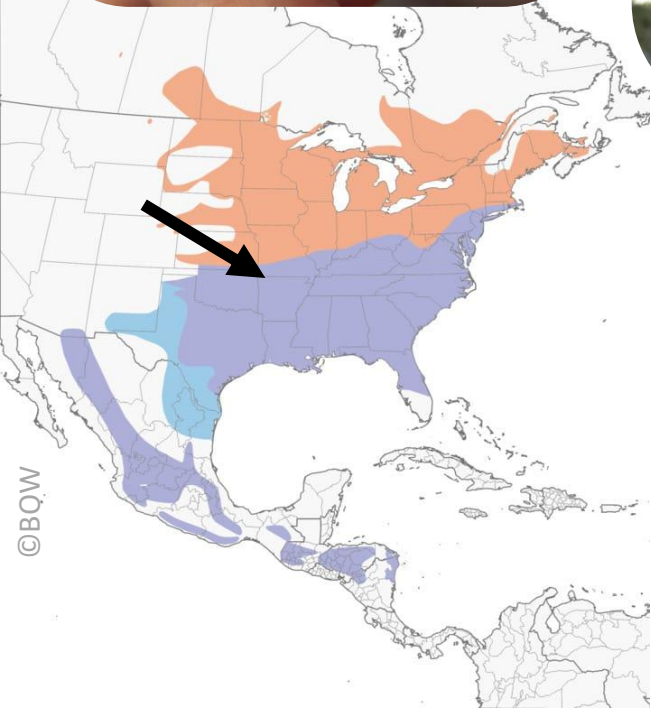
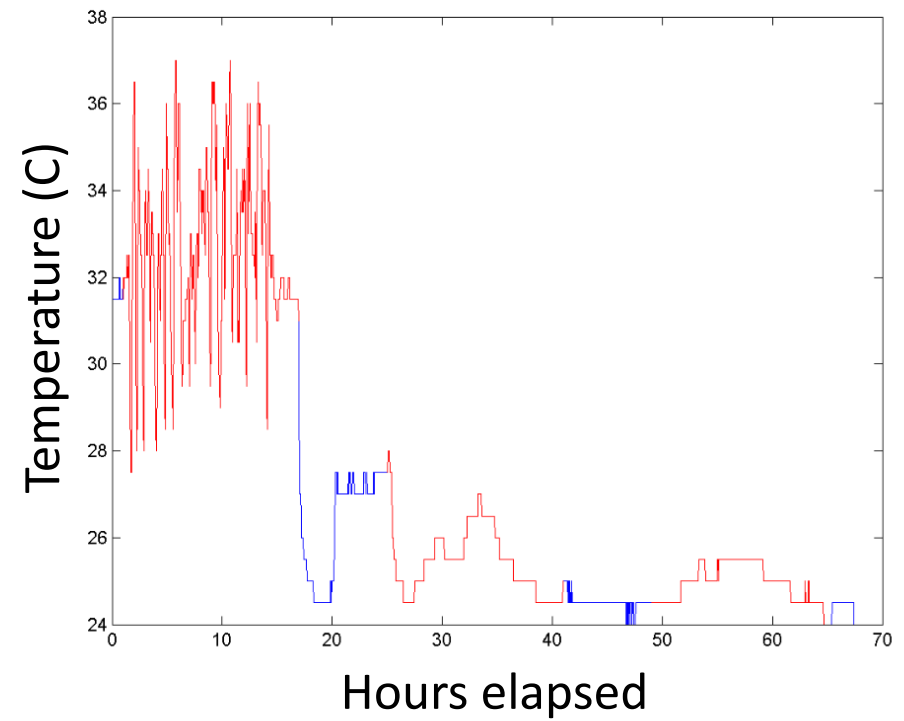
Research objectives:

1. Calculate **recruitment** into the local population
2. Study **winter roosting behavior** of adults and non-dispersing HYs
3. Establish whether pairs practice **assortative mating**
4. Determine what factors influence **box occupancy and productivity**



Research objectives:

1. Calculate **recruitment** into the local population
2. Study **winter roosting behavior** of adults and non-dispersing HYs
3. Establish whether pairs practice **assortative mating**
4. Determine what factors influence **box occupancy and productivity**



Research objectives:

1. Calculate **recruitment** into the local population
2. Study **winter roosting behavior** of adults and non-dispersing HYs
3. Establish whether pairs practice **assortative mating**
4. Determine what factors influence **box occupancy and productivity**

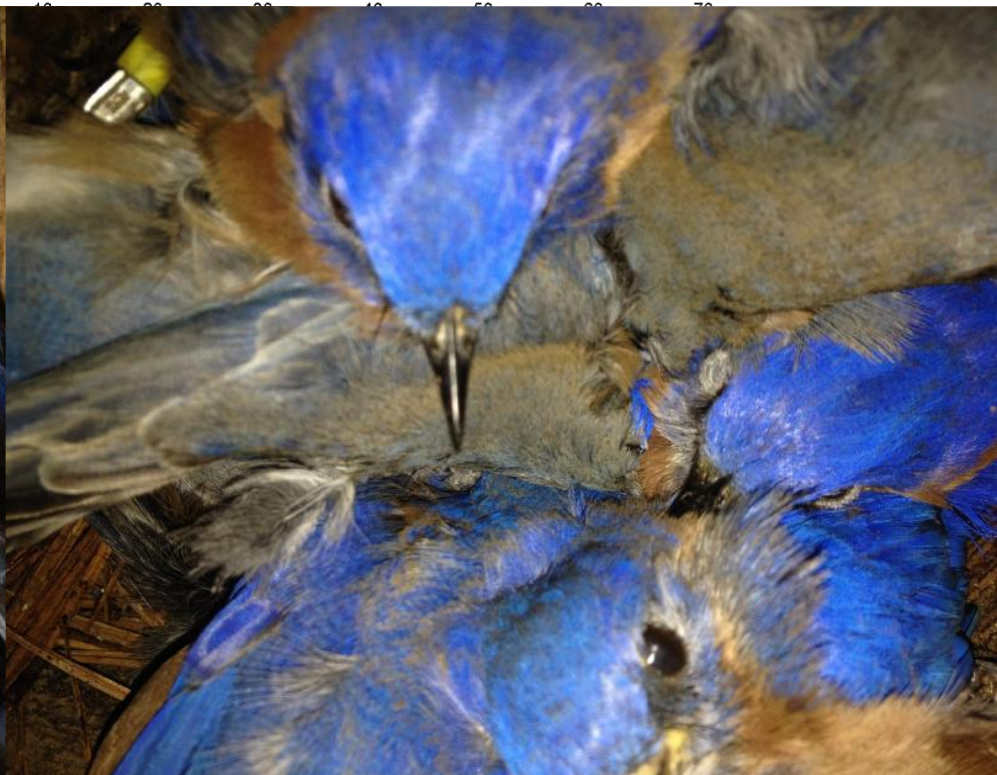
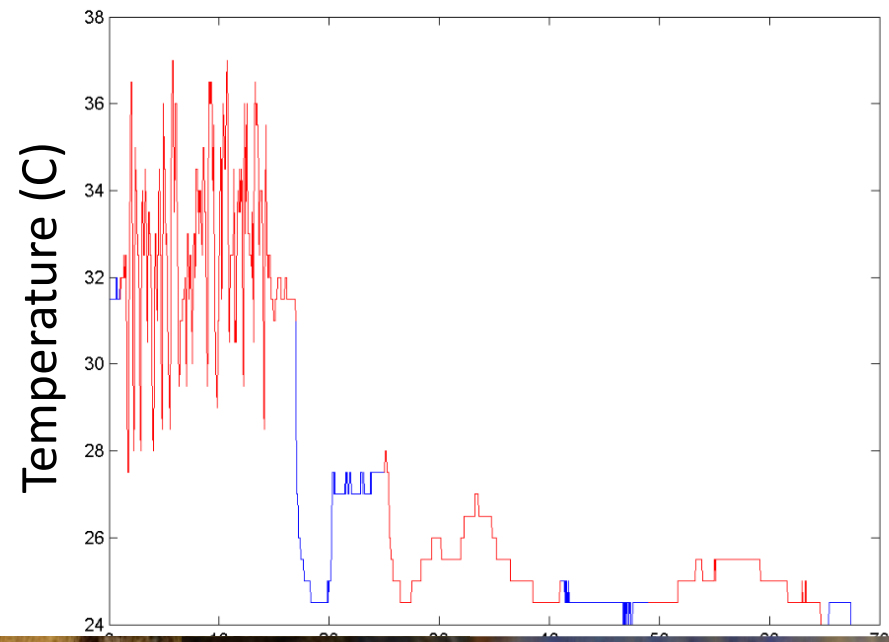




Photo by Quin Warsaw



Photo by Bob McGrath



©BQW

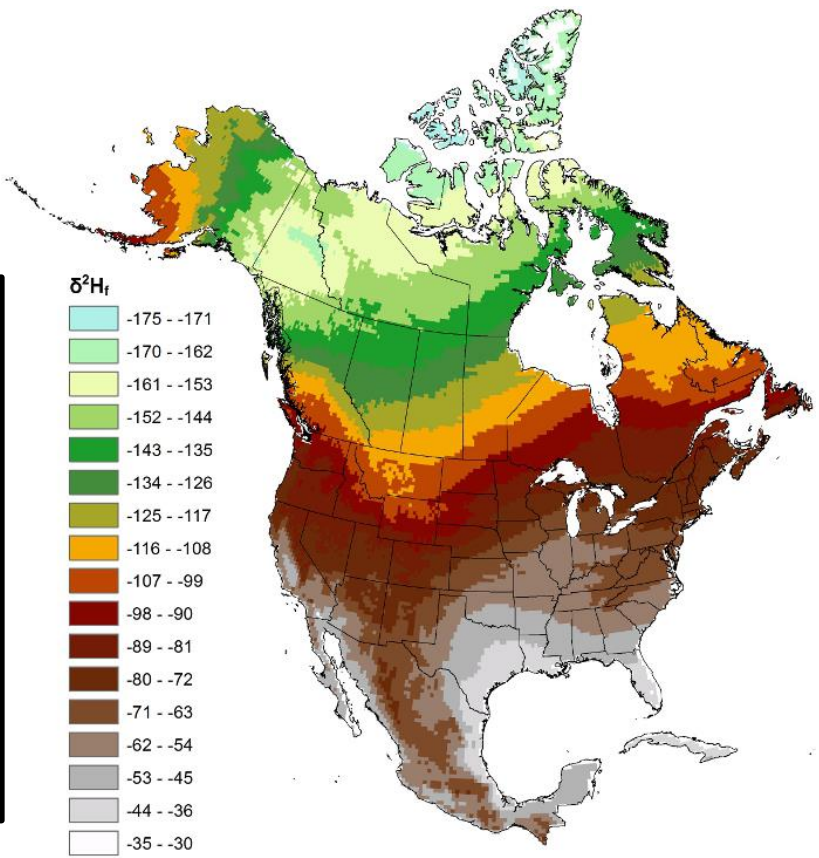
- Research objectives:**
1. Calculate **recruitment** into the local population
 2. Study **winter roosting behavior** of adults and non-dispersing HYs
 3. Establish whether pairs practice **assortative mating**
 4. Determine what factors influence **box occupancy and productivity**

Photo by Quin Warsaw



You from around here?

δD value of animal tissues provides information about **where tissues were grown**, making hydrogen isotopes a good tool to distinguish between **resident** and **migrant birds**



Research objectives:

1. Calculate **recruitment** into the local population
2. Study **winter roosting behavior** of adults and non-dispersing HYs
3. Establish whether pairs practice **assortative mating**
4. Determine what factors influence **box occupancy and productivity**

©BQW

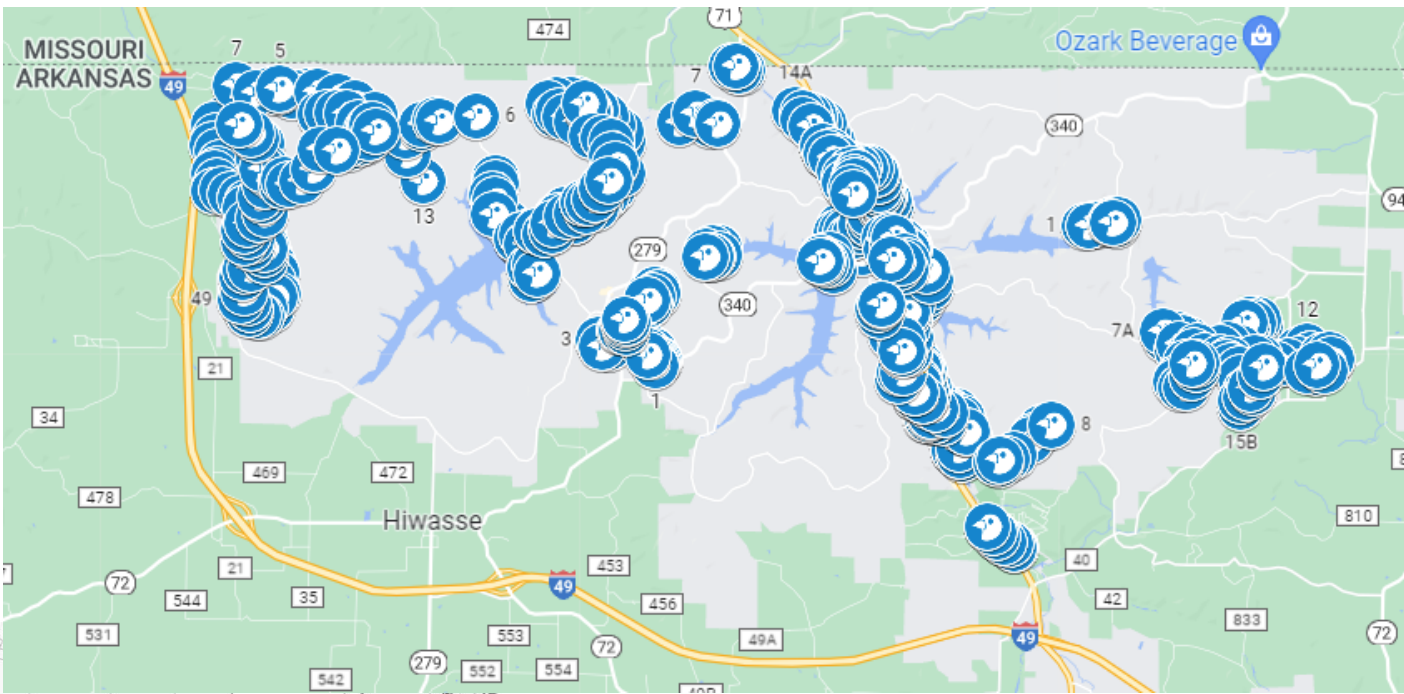
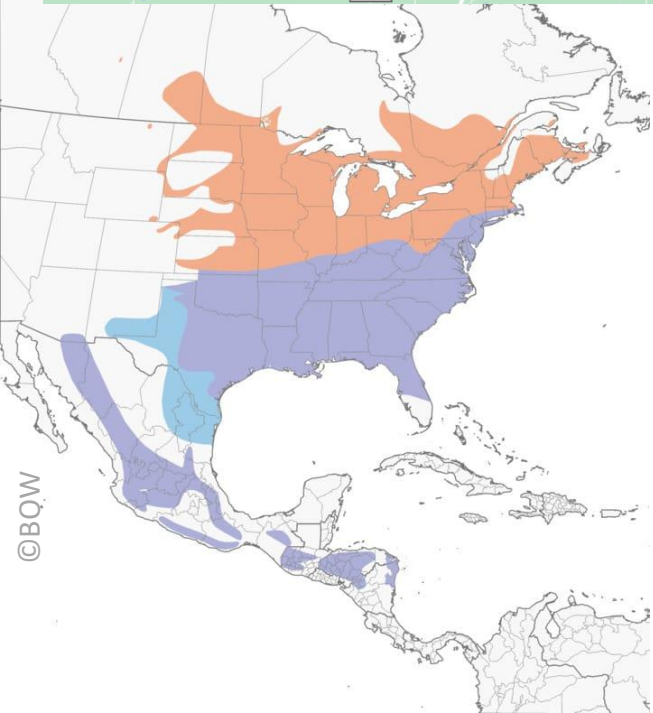


Photo by Quin Warsaw



Research objectives:

1. Calculate **recruitment** into the local population
2. Study **winter roosting behavior** of adults and non-dispersing HYs
3. Establish whether pairs practice **assortative mating**
4. Determine what factors influence **box occupancy and productivity**

Box variables: box age, paired vs not, entrance type, baffle type, entrance orientation, box height, internal dimensions, box legacy

Landscape variables: distance to road, water, nearest structure; openness; vegetation structure within 25 m of box; land-use type

We then model how these variables influence **occupancy** and **productivity** and ask whether the pattern is consistent across **sites**, **seasons** (i.e. breeding vs overwintering occupancy), and **years**



Photo by Quin Warsaw

Research objectives:

1. Calculate **recruitment** into the local population
2. Study **winter roosting behavior** of adults and non-dispersing HYs
3. Establish whether pairs practice **assortative mating**
4. Determine what factors influence **box occupancy and productivity**



Photo by Quin Warsaw

Research objectives:

1. Calculate **recruitment** into the local population
2. Study **winter roosting behavior** of adults and non-dispersing HYs
3. Establish whether pairs practice **assortative mating**
4. Determine what factors influence **box occupancy and productivity**